

Hepatus 5

Diagnostic ultrasound system

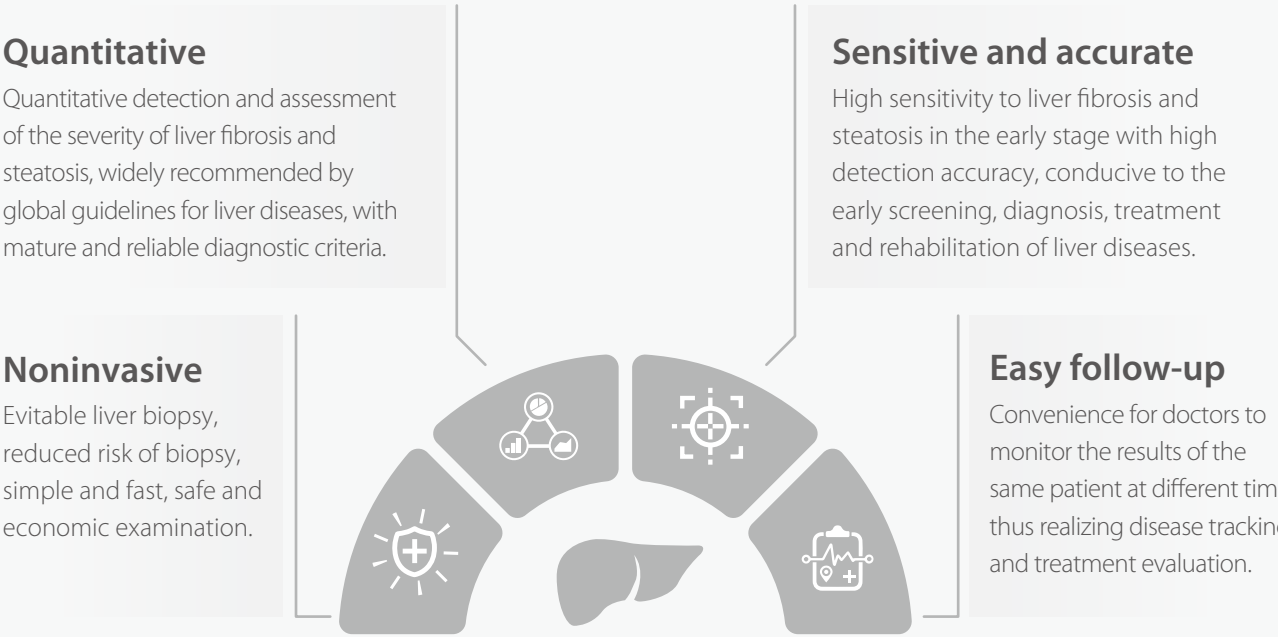
New Vision for Liver Care



A new era for noninvasive diagnosis of liver disease

The health of the liver cannot be ignored. Fatty liver disease and liver fibrosis will further develop into liver cirrhosis, liver cancer and even liver failure if they are not treated timely.

Hepatus is a professional non-invasive diagnostic system for liver diseases, providing quantitative result to indicate the stage of liver fibrosis. It is accurate, efficient, reliable, and convenient for disease follow-up, opening a new era for noninvasive diagnosis of liver diseases.



Wide range of clinical applications

It is applicable to the screening, diagnosis, monitoring and treatment assessment of liver fibrosis and steatosis due to various reasons. Especially during early stage.

- ✓ Nonalcoholic fatty liver disease

✓ Alcoholic liver disease

✓ Chronic hepatitis B

✓ Chronic hepatitis C
- ✓ Drug-induced liver injury

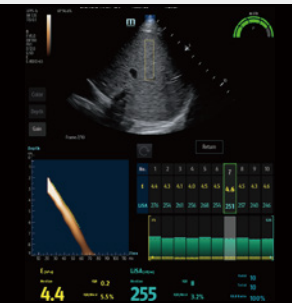
✓ Autoimmune liver disease

✓ Biliary tract disease

New vision for detection

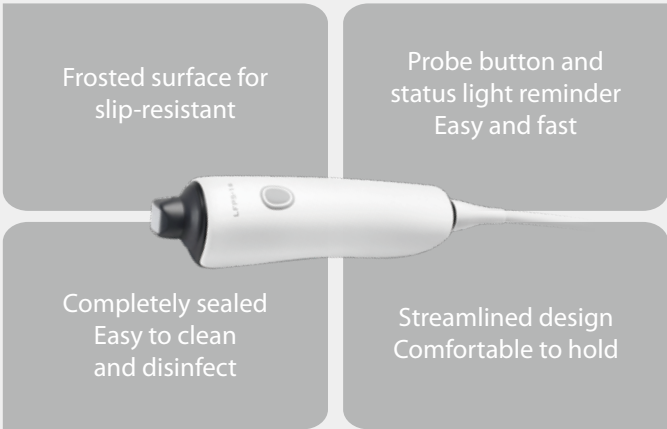
Advanced ViTE (Visualized Transient Elastography)

- Conduct quantitative detection and evaluation of liver fibrosis and steatosis under the visual guidance of real-time 2D ultrasound
- Avoid blood vessels and lesions, improve the accuracy and reliability of the measurement
- Greatly reduce the operation difficulty, improve the accuracy and repeatability of quantitative measurements



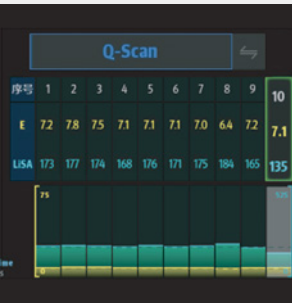
Integrated probe design

- Ultra-wideband frequency technology, it covers all patients of different ages and body shapes
- One probe for ultrasound visual guidance and quantitative detection, no need to switch probes during the scan
- The acquisition process can be accomplished with one integrated button



Fast Q-Scan intelligent acquisition

- 10 groups of effective data can be automatically and continuously acquired and intelligently screened by pressing one button
- Precise and valid detection results can be obtained immediately within merely **7 seconds** after positioning



Reliable quality control index

- Pressure index (P): quality control of probe pressure
- Motion stability index (m-STB): ensure respiratory stability
- Clear indication with different color to improve the quality control during examination

